



Kimble Close

East Hunsbury, Northampton

oriordanbond
SALES & LETTINGS



Kimble Close

East Hunsbury
NN4 0RF

Price
£325,000

Offered to the market with no onward chain is this well presented three bedroom detached bungalow, situated at the end of a cul-de-sac, within the popular area of East Hunsbury. This bungalow has been owned by the vendor since constructed and offers versatile accommodation.

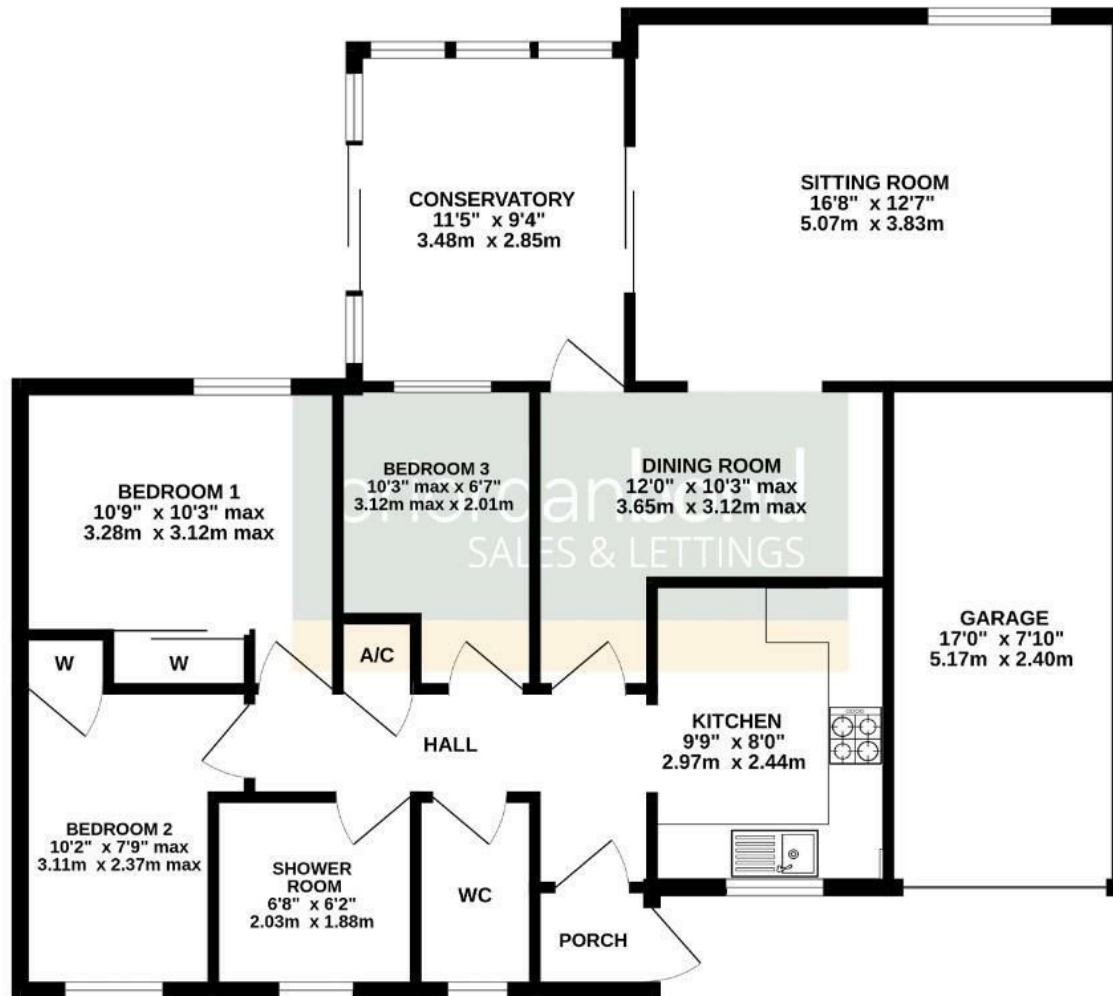
Entrance porch via a double glazed door with a further door leading to a hallway where you will find access to the loft space, an airing cupboard, a cloakroom/WC, and doors leading to all rooms. There is a fitted kitchen with integrated oven, hob and extractor, a separate dining room adjacent with doors to a spacious sitting room and a conservatory. From the hallway are three bedrooms, with wardrobes to two rooms, and a wonderful re-fitted shower room. Outside is a block paved driveway to the front leading to an attached garage with electric roller door and further parking/caravan storage via newly fitted double gates. The rear garden is mainly westerly facing and landscaped for low maintenance with a paved patio seating area, mature planted raised borders, a timber shed and timber fencing to enclose. Further benefits include uPVC double glazing and gas radiator heating. (B/1023/M)

- Three bedroom detached bungalow
- Two reception rooms and conservatory
- Re-fitted shower room
- Gas radiator heating
- Westerly facing rear garden
- Off road parking and garage with electric door



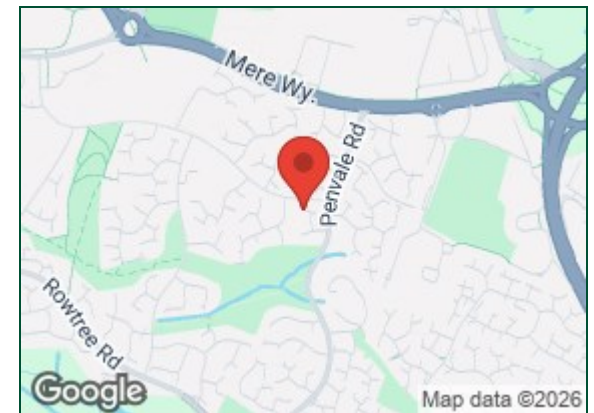
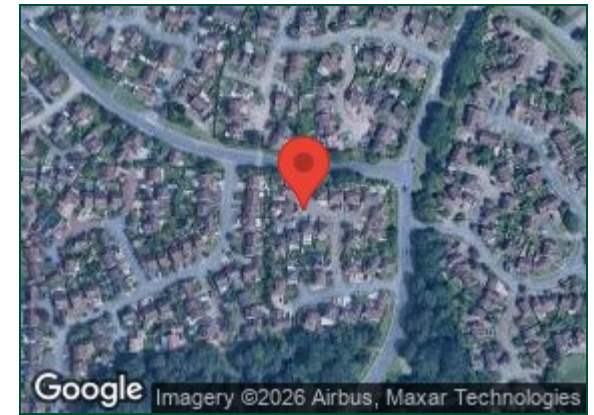


GROUND FLOOR
1023 sq.ft. (95.1 sq.m.) approx.



TOTAL FLOOR AREA : 1023 sq.ft. (95.1 sq.m.) approx.

Whilst every attempt has been made to ensure the accuracy of the floorplan contained here, measurements of doors, windows, rooms and any other areas are approximate and no responsibility is taken for any error, omission or mis-statement. This plan is for illustrative purposes only and should be used as such by any prospective purchaser. The services, systems and appliances shown have not been tested and no guarantee as to their operability or efficiency can be given.
Made with Metropix ©2026



Additional information

- Council Tax Band: D
- Energy Efficiency Rating: D

Viewing

Viewing strictly by appointment – details below

Disclaimer

O'Riordan Bond Estate Agents Limited has not tested apparatus, equipment, fittings or services and so cannot verify they are in working order. The buyer is advised to obtain verification from their solicitor or surveyor.

O'Riordan Bond Hunsbury Sales

01604 706007

hunsbury@oriordanbond.co.uk

